

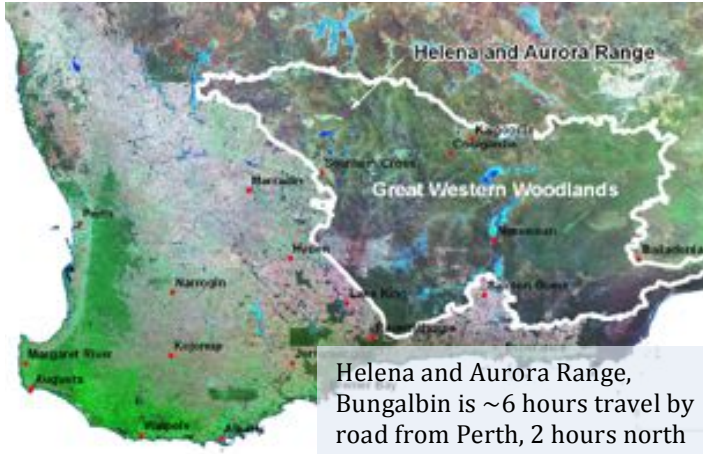


Helena and Aurora Range, Bungalbin

website: www.helenaaurororange.com.au Youtube: <http://youtu.be/RUP1cxqLIA>

Facebook: <https://www.facebook.com/HelenaAuroraRange>

HARA Inc. PO Box 7232, Karawara, WA 6152

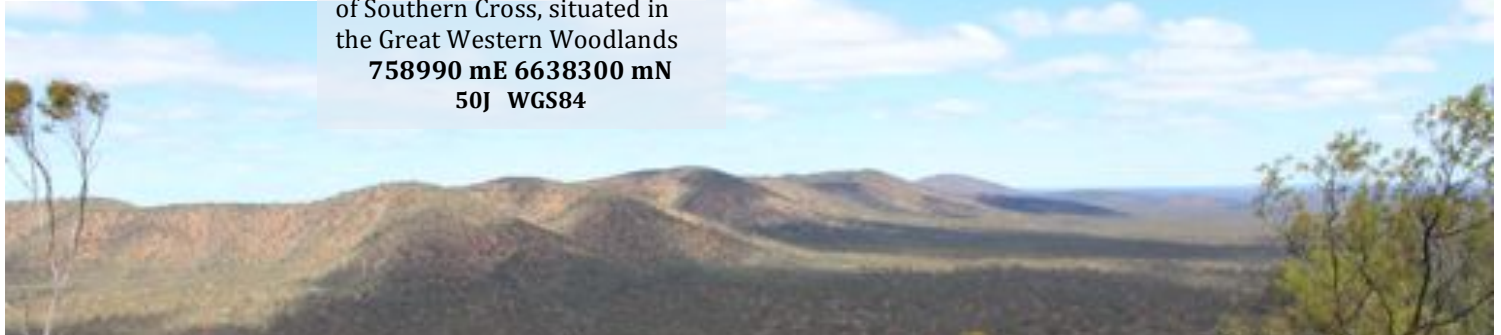


Helena and Aurora Range is a Banded Ironstone Formation (BIF) range, just a day's travel east of Perth. This range is the largest BIF range in the Central Yilgarn (704 m high), with the highest species conservation and landform values.

It is time to right the balance between iron ore mining and conservation in the Central Yilgarn and protect Helena and Aurora Range Bungalbin in its entirety, **the jewel in the crown** of BIF ranges, for future generations.

Helena and Aurora Range, Bungalbin is ~6 hours travel by road from Perth, 2 hours north of Southern Cross, situated in the Great Western Woodlands
758990 mE 6638300 mN
50J WGS84

Helena and Aurora Range is Kalamai Kapurn people's country, they call the range Bungalbin



Home to many rare, threatened and endemic species

The range features ancient geology and landscapes



Government is still considering mining as a future landuse on Helena and Aurora Range, Bungalbin



Time for community to have a voice in protecting WA HERITAGE - Please Sign the Petition
Join Helena and Aurora Range Advocates (HARA) Inc. (\$15), Sign up to Mailing list and Blog on website